

St GENÈVE  
SYMPHONY

FALL / WINTER COLLECTION 2024







## A SYMPHONY OF COLOURS & TEXTURES

Inspired by the concert of harmonious fabrics coming together to create a soothing beauty, the Symphony Collection composes a rhythmic balance of rich textures, natural materials and quiet palettes.

A neo-classic style with contemporary flair meticulously designed from Opus's soft tones to Fjord's rich textures. Symphony draws inspiration from nature's movement, gentle tones, and rich compositions.

A curation of landscape-inspired jacquards, calming botanical sateens and new artful living fabrics characterize Symphony.



LOSSEN ZIMMERMAN  
CREATIVE DIRECTOR





Opus styled with Capri Dove Grey, Zora Pewter, Alfie Mist, Divina Shadow, and Forte Grey.

# OPUS

## JACQUARD

The magnificent work of creating a moiré effect throughout this exquisite jacquard is only possible with Italian craftsmanship's expertise. Like cutting through malachite stone, Opus features an undulated pattern of rippled figures shaded by tones of blue, taupe and grey. A perfect balance of visual interest and craftsmanship, Opus features a rhythmic cross-section of nature-inspired shades that cascade throughout, making it the most opulent of luxuries.

100% Giza Egyptian long staple cotton  
358 thread count  
Fabric from Italy  
Sewn in Canada  
Machine washable

---

### FINISHINGS

Duvet Cover and Shams  
*1" flange with back button band*

### BACKED IN

Capri Dove Grey







Paloma styled with Capri Cream, Slate and Irish Mist, and Nina Walnut/Linen (left), Capri Putty, and Alfie Midnight (above).

# PALOMA

## PRINTED SATEEN

Pleasing botanicals in modern colour schemes. Paloma brings a contemporary floral landscape with vibrant indigo, hunter-greens, amber and pine hues - this floral print comes to life on its cloud background. Let your space bloom this season under watercolour branches of indigo, hunter-green and gold hues.

100% long staple cotton

340 thread count

OEKO-TEX® certified

Made in Portugal for St Genève

Machine washable

---

### FINISHINGS

Duvet Cover and Shams

*1" flange with hidden zipper  
pattern overall*

### SIZING

Duvet Covers - Queen and King

Shams - Regular, Standard, Queen, King and Euro





# ANELLO ALABASTER

JACQUARD

Anello Alabaster jacquard collection of circle patterns with complementary raised stripe designs can be combined to enrich the texture of any bedroom. Woven from long staple cotton and silk, and backed with Venice Cream, Anello elevates your bedroom effortlessly. The patterns combined with the delicate tone of alabaster and blonde hues, create the most exquisite monochromatic woven jacquard.

72% long staple cotton / 28% silk

Fabric from Italy

Sewn in Canada

Machine washable

---

## FINISHINGS

Duvet Cover and Shams

*knife edge with seam zipper*

*1/8" solid piped*

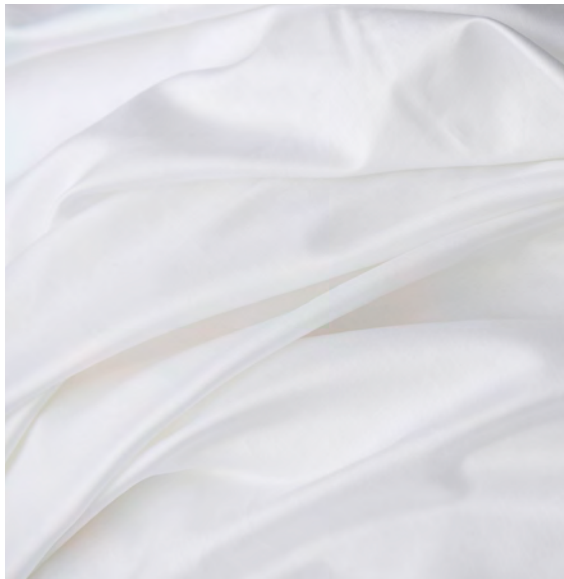
BACKED IN

Venice Cream



*Anello Alabaster styled with Capri Cream and Divina Pearl.*





# GIZA 92

## SATEEN

Giza 92 cotton is a premium variety of cotton originating from the fertile Nile River Delta in Egypt. This cotton is highly prized for its extra long staple fibers, which measure between 1.45 to 1.5 inches, making it one of the longest cotton fibers available. These exceptionally fine threads can then be woven into the strongest of all Egyptian cottons, creating our amazingly fine, exceptionally soft, strong and luxurious Giza 92 bedding.

100% Giza Egyptian extra long staple cotton

400 thread count / 800 strand count

Fabric from Italy

Sewn in Canada

Machine washable

---

### FINISHINGS

Duvet Cover

*1" flange with hidden button band*

Shams

*1.5" flange with hidden button band*

Flat sheet and Pillowcases

*4" plain cuff*







# SOMERSET

## PRINTED SATEEN

This floral pattern will enchant you by bringing English traditional energy bursting with countryside charm. Immerse yourself in the lake and ocean hues, and Irish mist botanicals. Let the whimsical aesthetic of handmade illustrations inundate your space.

100% long staple cotton

340 thread count

OEKO-TEX® certified

Made in Portugal for St Genève

Machine washable

---

### FINISHINGS

Duvet Cover and Shams

*1" flange with hidden zipper  
pattern overall*

### SIZING

Duvet Covers - Queen and King

Shams - Regular, Standard, Queen, King and Euro



*Somerset styled with Capri Dove Grey and Divina Shadow.*





Scala White styled with Opus, Divina Shadow, Alfie Mist, and Nina Charcoal.

# SCALA WHITE

## MATELASSÉ

Scala dresses any bedroom with its everyday elegance. Its snow white and pearl sheen finish delivers a delightful example of warmth, texture and softness. Scala sparkles with geometric precision creating an understated dazzling visual effect. This matoressé, made from exceptionally soft 100% Giza Egyptian long staple cotton, invites you to enjoy comfort with ease while elevating your bedroom.

100% Giza Egyptian long staple cotton

460 GSM

Fabric from Italy

Sewn in Canada

Machine washable

---

## FINISHINGS

Coverlet

*2" self hem with square mitered corners*

Shams

*knife edge with seam zipper*







Halo styled with Bianca Pebble, Forte Grey, Alfie Mist, and Nina Charcoal.

# HALO

## JACQUARD

Discover the beauty of monochrome with Halo. A striking combination of minimalist energy with casual sophistication. Halo with its pure milky matte and sheen finish creates a monochromatic scheme delivering comfort and elegance. Expertly crafted with traditional European techniques, Halo combines fine Italian linen with the exquisite Giza Egyptian long staple cotton, delivering a transitional design.

65% Giza Egyptian long staple cotton / 35% linen  
305 thread count  
Fabric from Italy  
Sewn in Canada  
Machine washable

---

### FINISHINGS

Duvet Cover and Shams  
*knife edge with seam zipper*  
*1/8" self piped*

BACKED IN  
Capri White





*Fjord styled with Capri Driftwood and Divina Shadow.*

# FJORD

## JACQUARD

Inspired by grand canyons, narrow bodies of water and U-shaped valleys, Fjord combines the traditional Italian craftsmanship of jacquard weaving with iconic mid-century style. Gaze at the shimmering earthy tones of blue slate and taupe, as the intersecting shapes portray layers of rivers, rocks and valleys. Let the vista of colour and everlasting movement dress your space.

100% Giza Egyptian long staple cotton  
358 thread count  
Fabric from Italy  
Sewn in Canada  
Machine washable

---

### FINISHINGS

Duvet Cover and Shams  
*knife edge with seam zipper*

BACKED IN  
Capri Driftwood





# PORTO

## SATEEN

Expanding our popular Porto Collection, we are thrilled to introduce the Porto duvet cover and pillow shams. The same finest Egyptian long staple cotton, woven into a luxurious, soft, and silky OEKO-TEX® certified sateen by our mill in Portugal, now comes as a duvet cover and shams. Simplistic and classic, Porto is the ultimate essential for a bedroom. Dress your bedroom with this white sateen finish of Porto.

100% Egyptian long staple cotton  
300 thread count  
OEKO-TEX® certified  
Made in Portugal for St Genève  
Machine washable

---

### FINISHINGS

Duvet Cover and Shams - White only

*knife edge with seam zipper*

### SIZING

Duvet Covers - Euro Twin, Queen and King

Shams - Queen, King and Euro



*Porto duvet cover and shams styled with Porto White sheet set.*







# NOMAD

## PRINTED SATEEN

Nomad is a premium print that fuses vibrant earth tones with a clean modernist aesthetic. Printed on a light backdrop, an informal geometric stripe featuring storm grey and lime rickey tones. Nomad's bohemian energy creates a relaxed comfortable atmosphere with a contemporary edge. This vibrant graphic pattern adapts to many styles while bringing a laid-back feel.

100% long staple cotton

340 thread count

OEKO-TEX® certified

Made in Portugal for St Genève

Machine washable

---

### FINISHINGS

Duvet Cover and Shams

*1" flange with hidden zipper  
pattern overall*

### SIZING

Duvet Covers - Queen and King

Shams - Regular, Standard, Queen, King and Euro



Nomad styled with Capri Cream, Capri Storm Grey, and Divina Celadon.





Audra styled with Capri Ivory (right), Capri Dove Grey and Storm Grey, and Divina Shadow (above).

# AUDRA

## PRINTED SATEEN

Audra's sophisticated fine lines and delicate tones of apricot, ivory and dove grey, evoke peaceful nights and joyful awakenings. With pristine dove grey strokes, this 100% long staple cotton sateen paints a gorgeous botanical with gentle colouration that inspires noble strength and feminine grace.

100% long staple cotton

340 thread count

OEKO-TEX® certified

Made in Portugal for St Genève

Machine washable

---

### FINISHINGS

Duvet Cover and Shams

1" flange with hidden zipper  
pattern overall

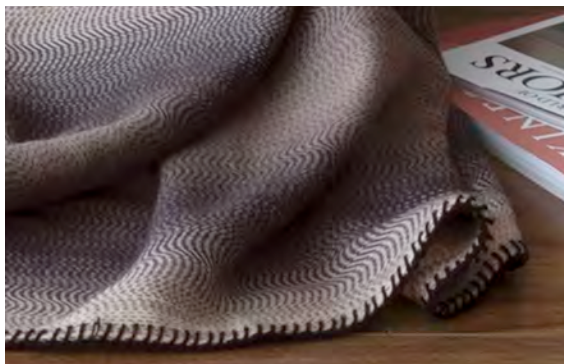
### SIZING

Duvet Covers - Queen and King

Shams - Regular, Standard, Queen, King and Euro







# COPERTA

## THROW & BLANKET

Deliciously cozy and soft, Coperta fuses the softness of cotton with the unparalleled warmth of wool in a blend of desert tones at sunset. The gradient of neutrals, the miniature dash line patterns, and the blanket stitch finish – deliver a casual sophistication to your space.

58% cotton / 42% wool

Fabric from Italy

Sewn in Canada

Dry clean recommended

---

### FINISHINGS

Throw

52" x 70"

*blanket stitch*

Blanket

66" x 90" | 80" x 90" | 92" x 90" | 108" x 90"

*blanket stitch*



# HOXTON

## THROW, BLANKET & CUSHIONS

The finest and purest composition of fabrics. Hoxton combines cashmere, silk and cotton, to fashion the most sophisticated textile. Inspired by overlapping waves, Hoxton creates soft geometrics, a wave pattern beautifully finished with a 1.5" mitered hem. This reversible matelassé is designed in brown hues from walnut to oak, while the silk shimmers with glints of lightness.

62% cashmere / 24% cotton / 14% silk

Fabric from Italy

Sewn in Canada

Dry clean recommended

---

### FINISHINGS

Throw

52" x 70"

1.5" self hem

Blanket

66" x 90" | 80" x 90" | 92" x 90" | 108" x 90"

1.5" self hem

Cushions

*knife edge with invisible zipper*





# TUTTO

NEVER LEAVE HOME WITHOUT IT!

Tutto is an all-in-one accessory designed to accompany you on all your adventures. Created from 100% Italian linen sateen, Tutto is incredibly functional while maintaining a lush appearance. The lightweight carry sac allows you to transport your beautiful robust linen wherever you go! Going for a swim? Tutto is a towel with fast absorption and quick drying. Al fresco dining? Tutto is a blanket! A night out with a little chill in the air? Tutto is a shawl. Long flight? Tutto is a throw.

The Tutto sac is available in three solid colours - natural, ice and grey. Choose from one of our 9 different colourways for your Tutto. Carry your Tutto over the shoulder, cross-body or backpack style!

100% linen  
Fabric from Italy  
Sewn in Canada  
Machine washable

---

## SIZE

Sac  
9" x 14"

Tutto  
39" x 70"



# SLEEP MASK

FOR BRIGHTER DAYS, CALM NIGHTS

For a relaxed night's sleep, rest your eyes in the softness of silk. While the mask obstructs the light, you will fall asleep faster and deeper. The smooth exterior silk will care for your delicate skin, while the silk filling allows it to breathe. Improve your sleep quality and facial skin care with the St Genève Sleep Mask.

100% silk  
100% silk fill  
Made in China for St Genève  
Dry clean recommended

Only available in Canada





Le Petit Perla and Patrizia Pebble (right), Nicola Linen, Avalon, and Toddler Duvet (above).

# LE PETIT

## COLLECTION

The beautiful natural fibres of cotton, silk, linen and MicroModal are ideal for the crib and children's bedding. Their breathable properties help regulate body temperature for a restful sleep. Ideal for babies, toddlers, children and parenthood as they are soft, durable and easy to wash.

### BED LINENS

Camille  
Capri  
Carezza Cora  
Imperial Hotel  
Nico Organic  
Nicola  
Perla  
Sophia

### BLANKETS

30" x 40"  
Avalon  
Patrizia

### PROTECTORS

St Dormeir  
Waterproof

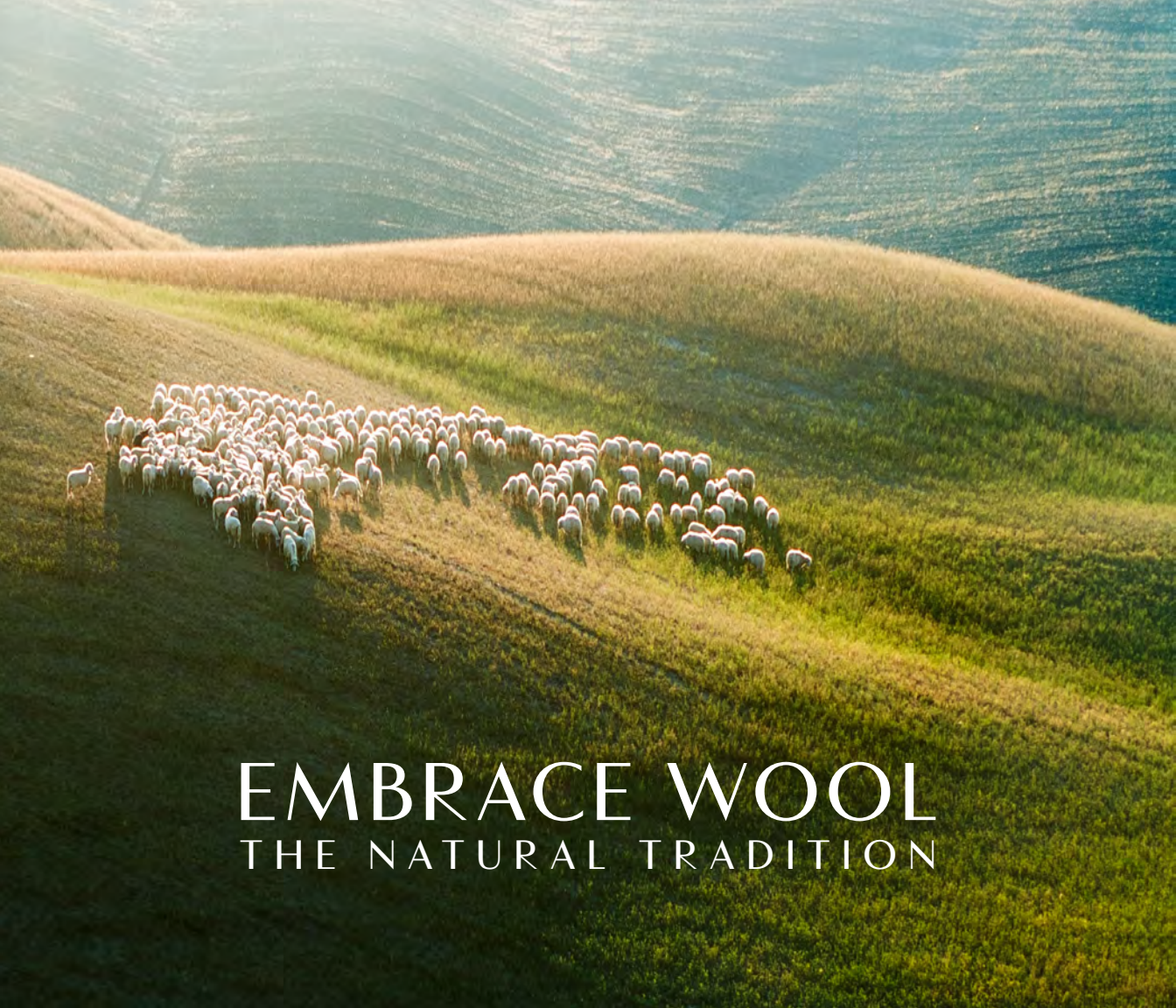
### TODDLER DUVET

38" x 45"  
600 loft White Goose Down  
550 loft Silver Duck Down

Only available in Canada







# EMBRACE WOOL

## THE NATURAL TRADITION



### THERMO-REGULATING

For over 10,000 years, people have cherished wool for its enduring comfort, warmth, and breathability.



### SUSTAINABLE

Wool is renewable, biodegradable and sustainable; effortlessly harmonizing with our planet's rhythms and cycles.



### MOISTURE WICKING

Wool fibers naturally absorb and release moisture, keeping you dry and cozy.



### RESILIENT

With its natural crimp, wool lasts longer than synthetics; a fiber engineered by evolution over millennia for unparalleled comfort and resilience.

Fall in love with wool and experience year-round comfort with Piatra Duvets and Pillows, and St Dormeir Protectors.







"COMPOSE WITH COLOUR, TEXTURE AND  
LAYERS TO CREATE YOUR SYMPHONY."

LOSSEN ZIMMERMAN  
CREATIVE DIRECTOR

Creative Director: Lossen Zimmerman  
Photographer: Tracey Ayton  
Product Development: Scarlett Sijia Ma  
Graphic Design: Lisa Perkins  
Copywriter: Gabriela Monroy





St GENÈVE

*good night buona notte bonne nuit*

STGENEVE.COM

PRINTED IN CANADA